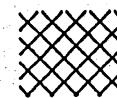


WHERE LOW VOLUMES* EXIST AND
TWO WAY TRAFFIC CAN SAFELY
BE MAINTAINED

• ——— 28" MIN. TRAFFIC CONES OR
CHANNELIZATION DRUMS.
(42" CANDLES OR
DRUMS PREFERRED)



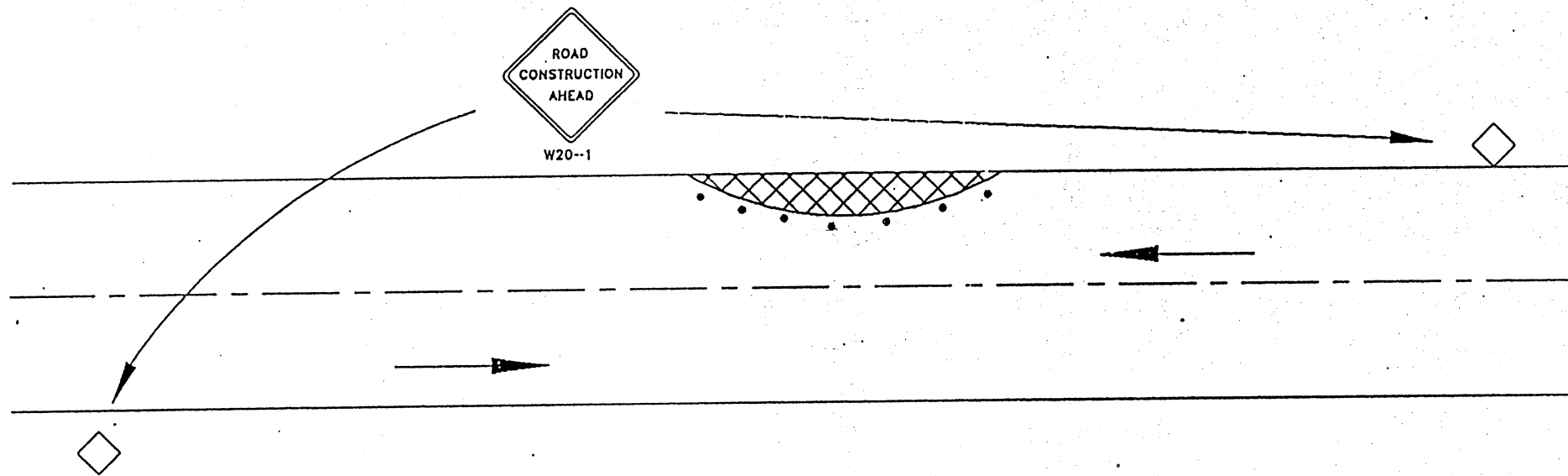
————— CONSTRUCTION AREA

NOTE: ALL SIGNING AND TRAFFIC CONTROL DEVICES
SHALL COMPLY WITH THE LATEST REQUIREMENTS OF THE
MANUAL ON UNIFORM TRAFFIC CONTROL DEVICES (MUTCD).
THIS DRAWING DEPICTS MINIMUM REQUIREMENTS ONLY. ADDITIONAL
TRAFFIC CONTROL MAY BE REQUIRED TO COMPLY WITH MUTCD.

* LESS THAN 500 VEH./DAY ADT
LOCAL ACCESS STREETS ONLY.

CITY OF BILLINGS

TYPICAL TRAFFIC CONTROL PLAN A



WHERE LOW VOLUMES* EXIST AND
TWO WAY TRAFFIC CAN SAFELY
BE MAINTAINED

• — 28" MIN. TRAFFIC CONES OR
CHANNELIZATION DRUMS.
(42" CANDLES OR
DRUMS PREFERRED)

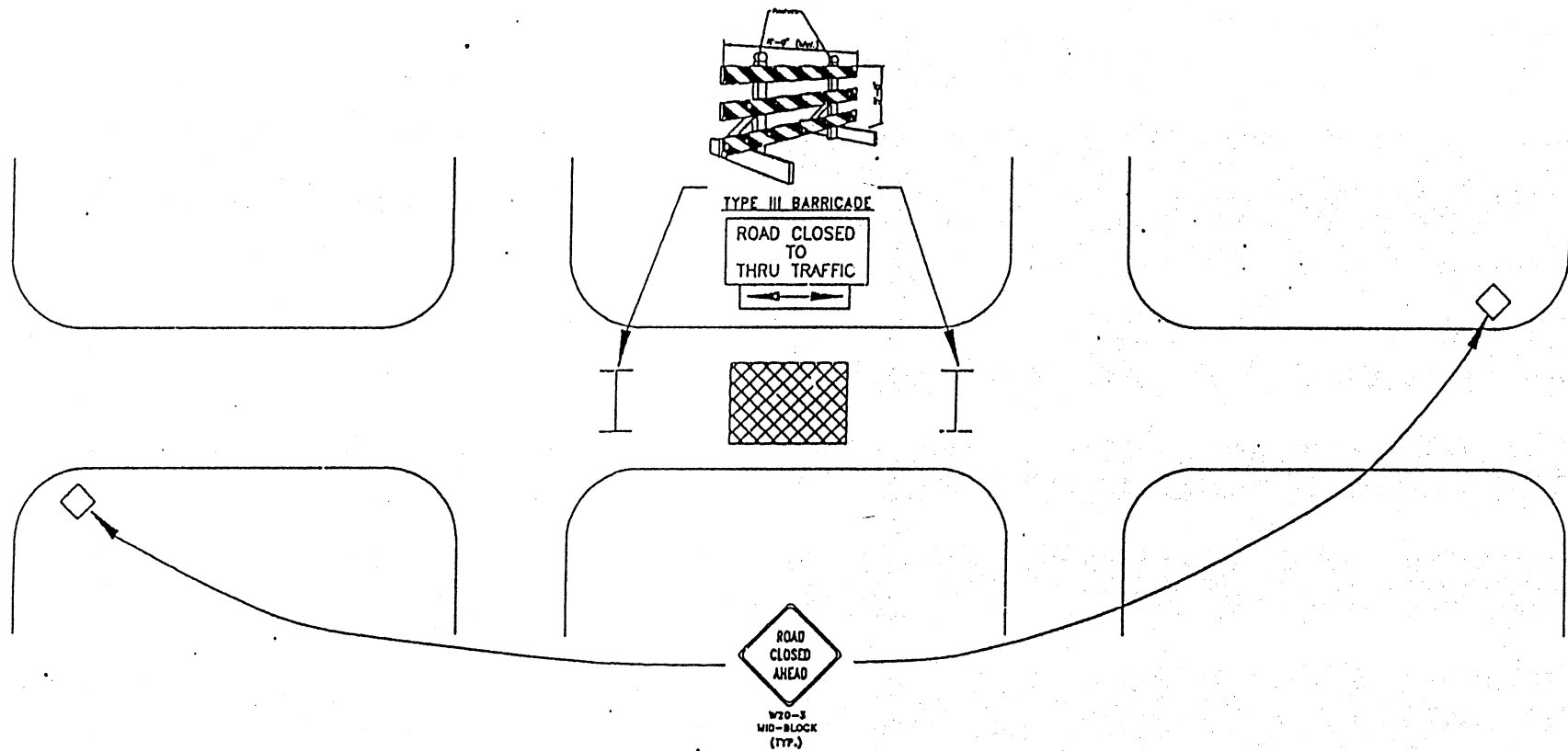
▨ — CONSTRUCTION AREA

NOTE: ALL SIGNING AND TRAFFIC CONTROL DEVICES
SHALL COMPLY WITH THE LATEST REQUIREMENTS OF THE
MANUAL ON UNIFORM TRAFFIC CONTROL DEVICES (MUTCD).
THIS DRAWING DEPICTS MINIMUM REQUIREMENTS ONLY. ADDITIONAL
TRAFFIC CONTROL MAY BE REQUIRED TO COMPLY WITH MUTCD.

* LESS THAN 500 VEH./DAY ADT
LOCAL ACCESS STREETS ONLY.


CITY OF BILLINGS

TYPICAL TRAFFIC CONTROL PLAN B



WHERE LOW VOLUMES* EXIST
& 2-WAY TRAFFIC CAN NOT
BE MAINTAINED.

I — TYPE III BARRICADE

 — CONSTRUCTION AREA

NOTE: ALL SIGNING AND TRAFFIC CONTROL DEVICES SHALL COMPLY WITH THE LATEST REQUIREMENTS OF THE MANUAL ON UNIFORM TRAFFIC CONTROL DEVICES (MUTCD). THIS DRAWING DEPICTS MINIMUM REQUIREMENTS ONLY. ADDITIONAL TRAFFIC CONTROL MAY BE REQUIRED TO COMPLY WITH MUTCD. "CONSTRUCTION AHEAD" SIGNING RECOMMENDED ON INTERSECTING STREETS.

* LESS THAN 500 VEH./DAY ADT
LOCAL ACCESS STREETS ONLY.

CITY OF BILLINGS

TYPICAL TRAFFIC CONTROL PLAN C